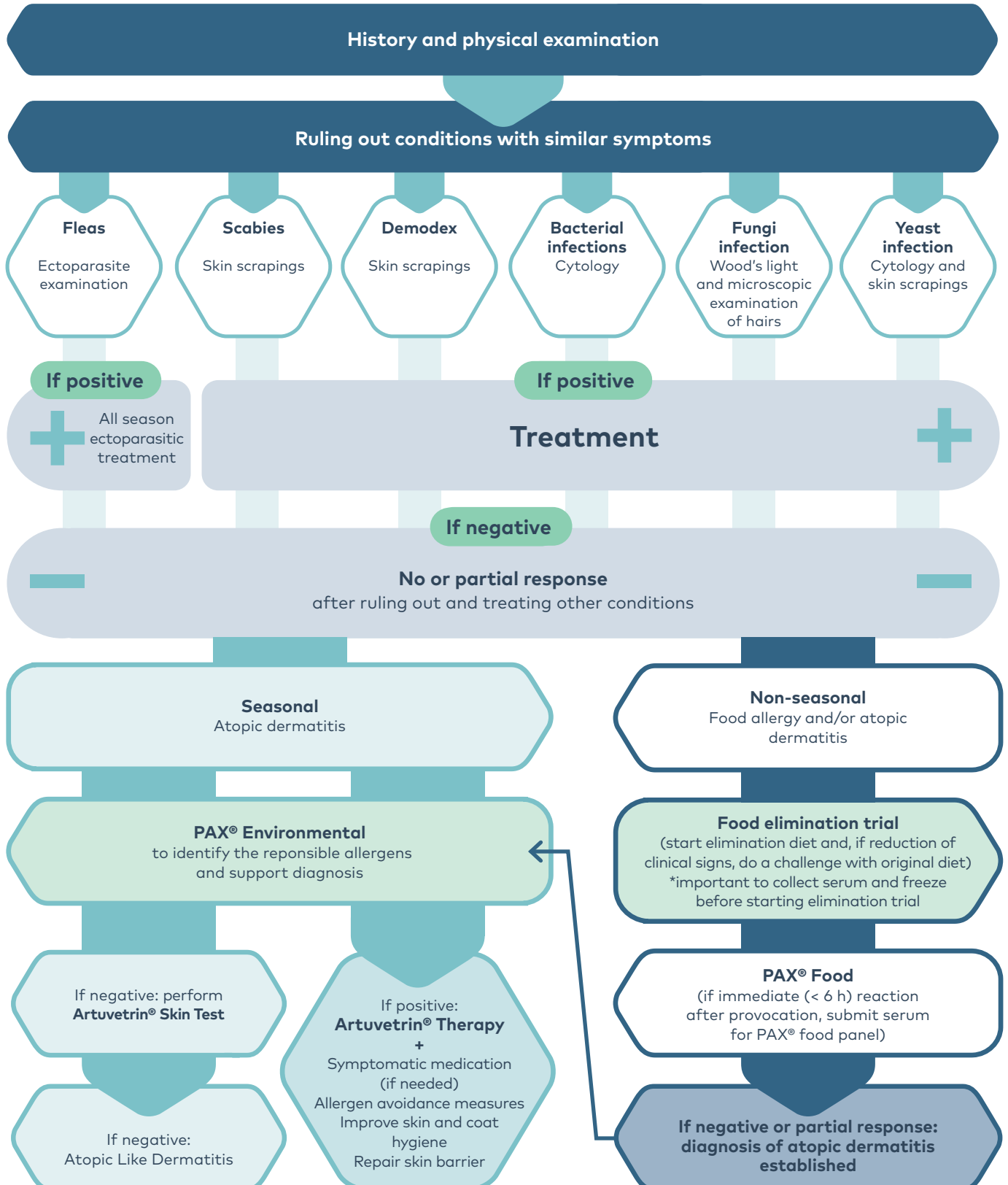


Allergy diagnosis

The diagnosis of atopy should be based on the clinical history and by excluding other conditions that can present similar symptoms.





Diagnostics PAX® Serum Test

- First quantitative multiplex macroarray specifically designed for companion animals
- Over 200 allergens included = lower testing cost per allergen
- Fully automated process = higher level of standardization (same result if tested multiple times)
- With CCD blocking and 2 blocking efficiency detectors
- Only 0.5 ml of serum needed
- Expected increase in serological test sensitivity due to a higher concentration of molecular allergens
- Identification of "primary" sensitizing allergens
- Identification of allergen cross-reactivities
- Selection of relevant allergens for specific immunotherapy



Artuvetrin® Skin Test

- 80 individual allergens or mixtures available
- 3ml vials (enough for 60 tests): cost-effective
- Supplied within 8 working days
- Concentrations based on determination of threshold values for reliable results
- Performed directly in the skin (local reaction): immediate result



Treatment Artuvetrin® Therapy

- Treats the root cause, not only the symptoms
- Effective, efficacy rate is 75%
- Identical allergens for allergy tests and therapies
- 10 months treatment with only one vial
- One vial, one concentration
- Only licensed therapy in Europe
- Delivery within 10 working days
- Easy to use
- Safe



DR. BADDAKY® OMEGA-3

Dr. Baddaky Omega-3 is a natural fish oil with the highest concentration of the essential Omega-3 fatty acids EPA and DHA.



PET'S RELIEF® ALLERGONE

Innovative solution for neutralisation of house dust allergens. Reduces the exposure to house dust allergens, which helps to reduce the allergic symptoms.

ALLERGONE spray contains an aqueous suspension of microcapsules. The core of microcapsules is filled with a mixture of substances affecting the chemical structure of allergen particles.

ALLERGONE forms a polymer film that glues dust allergens in larger particles stopping them from floating in the air and allowing aggregated allergens to be removed easily with conventional cleaning. Long-term protection against house dust mites – 5 months after a single application.



PET'S RELIEF® DERM-10

DERM-10 is a smooth wound cream containing powerful wound healing agents for a rapid recovery of all kinds of non-penetrating or superficial wounds.

It contains Zinc Oxide, Centella asiatica, Echinacea purpurea, Calendula officinalis, Hamamelis virginiana, Melaleuca viridiflora, Thuja occidentalis, Lavendula angustifolia, Salvia lavandulifolia, Arnica montana.

 **nextmune**



For more information,
please contact Nextmune.